

Statesman

Home Series

SHELTER
HOME SYSTEMS



40
YEARS
1978 2018



Standard Specifications

Standard Construction

- ⇒ 30 Year Architectural Fiberglass Shingles
- ⇒ Engineered Roof Trusses
- ⇒ Low Maintenance Vinyl Siding
- ⇒ 8' Walls
- ⇒ 2 x 6 @ 24" O.C. Outside Walls
- ⇒ 3/8" OSB Sheathing on Inside and Outside of Ext. Walls
- ⇒ 8" or 12" Tubular Laminated Steel Frame *(depends on length)*
- ⇒ 2 x 10 Floor Joists (16' wide & sectionals)
- ⇒ I-Joist Floor (20' wide)
- ⇒ Weatherproof exterior GFI Receptacle
- ⇒ Frost Free Tap c/w Check Valve
- ⇒ Coach Lights At All Exterior Doors
- ⇒ White Metal Fascia
- ⇒ T&G OSB Floor Decking; Glued And Screwed
- ⇒ Insulation: R-40 Ceiling, R-20 Wall, R-26 Floor
- ⇒ 6 MIL Poly Vapour Barrier in Ceiling and Sidewalls
- ⇒ Spraytexted 1/2" Gyproc Ceilings
- ⇒ Cathedral Ceiling in Kitchen, Dining Room and Living Room
- ⇒ 36" Insulated No Light Front Door c/w Peephole
- ⇒ 32" Insulated No Light Rear Door c/w Peephole
- ⇒ White PVC "Low E" Windows With Screen

Exterior Features

- ⇒ Third Gable
- ⇒ Decorative Pillars at 3rd Gable & Front of Home
- ⇒ False Gable on Front of Home (single wifes only)
- ⇒ 12" Residential Eaves on 3 Sides
- ⇒ Smart Start Around Windows

Kitchen

- ⇒ 18 CU. FT. Two Door Fridge - Top Freezer - White
- ⇒ 30" Electric Range - White
- ⇒ Glass Doors In Upper Cabinets over Bar
- ⇒ Double Stainless Steel Sink
- ⇒ Single Lever Faucet
- ⇒ Two Speed Range Hood Vented to Exterior

Bath

- ⇒ GFI Recetpacles
- ⇒ Dehumidistat on Main Bath Fan
- ⇒ One Piece Wall Tub/Shower in all Bathrooms
- ⇒ Single Lever Faucet
- ⇒ White Bath Fixtures
- ⇒ Shower Rod and Curtain Liner in all Bathrooms
- ⇒ Pewter Towel Bar and Paper Holder
- ⇒ 3" White Subway Tile Backsplash

Interior Finish

- ⇒ 3" White Subway Kitchen Tile Backsplash
- ⇒ PVC Wrap Cabinet Doors
- ⇒ Modular Cabinets
- ⇒ Lever Door Handles T/O
- ⇒ Wire Closet Shelving
- ⇒ 100% Polyurethane Carpet in Living Room and Bedrooms
- ⇒ No Wax Vinyl Flooring
- ⇒ Pewter Interior Door Hardware T/O
- ⇒ Pre-finished White Embossed Interior Doors
- ⇒ Ceiling Trim: Batten
- ⇒ Baseboards: 1011 Profile
- ⇒ Window/Door Trim: 1011 Profile
- ⇒ Closets: Battens Throughout
- ⇒ Utility Cabinets Above Washer and Dryer
- ⇒ 2" Blinds T/O

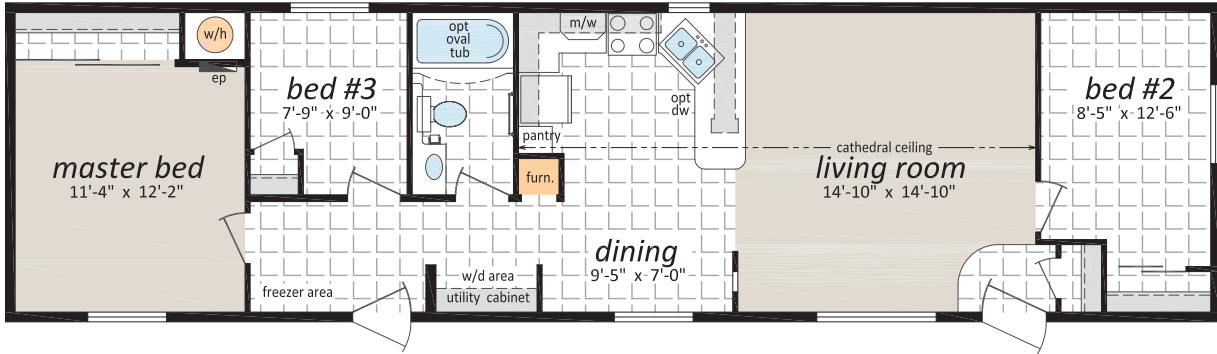
Utilities

- ⇒ 40 GL Natural Gas Water Heater
- ⇒ High Efficiency Natural Gas Furnace
- ⇒ 100 Amp Electric Service Panel
- ⇒ Electric Conduit Through Floor
- ⇒ Light Bulb Package
- ⇒ Smoke/CO Alarms w/Battery back up in Hallways
- ⇒ Smoke Alarms in all Bedrooms
- ⇒ Living Room Wired for Ceiling Fan c/w Separate Light Switch
- ⇒ Copper Wiring Throughout

ST-401

16' x 60' 960 sq. ft.

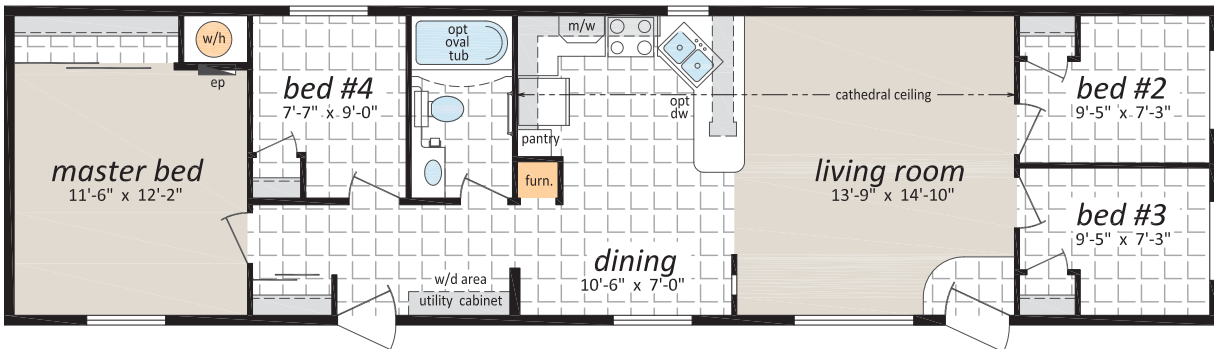
3 Beds, 1 Bath



ST-403

16' x 60' 960 sq. ft.

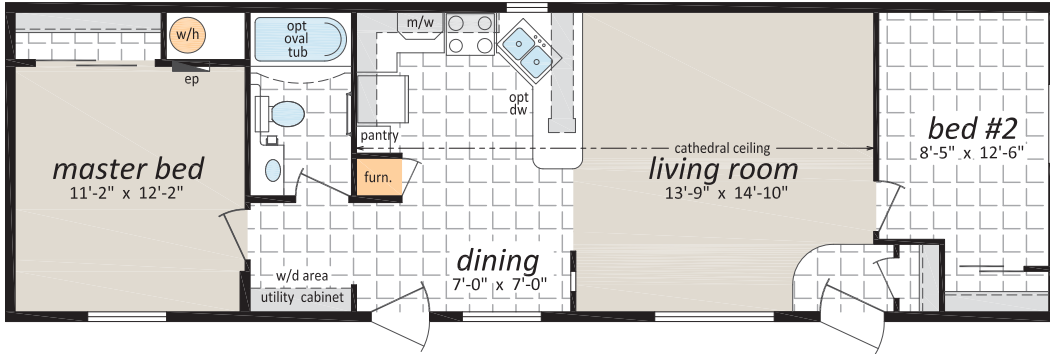
4 Beds, 1 Bath



ST-405

16' x 52' 832 sq. ft.

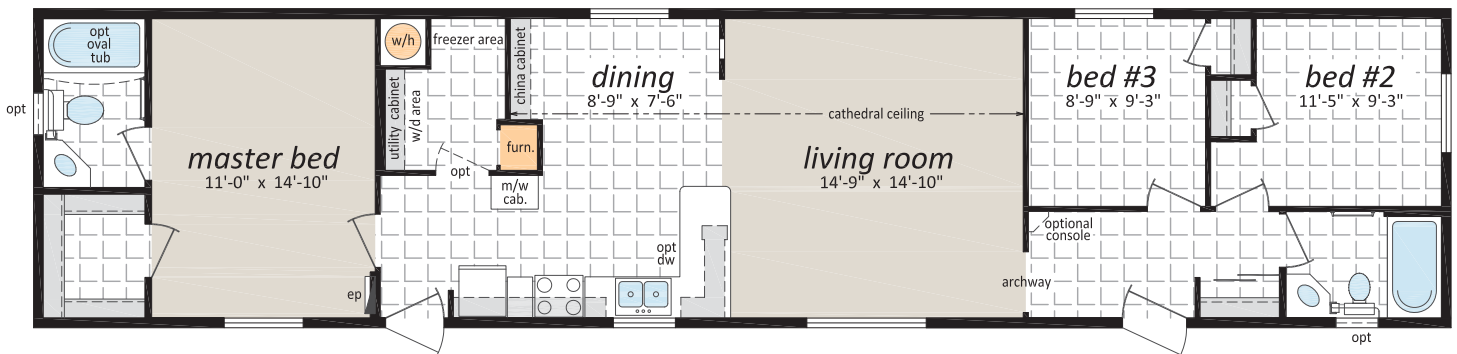
2 Beds, 1 Bath



ST-406

16' x 70' 1,120 sq. ft.

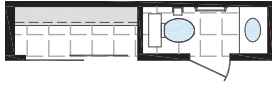
3 Beds, 2 Baths



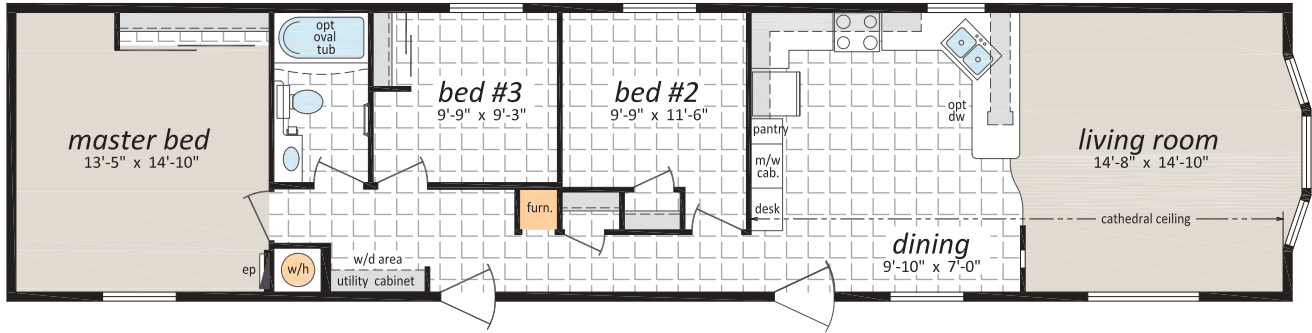
ST-409

16' x 68' 1,088 sq. ft.

3 Beds, 1 Bath



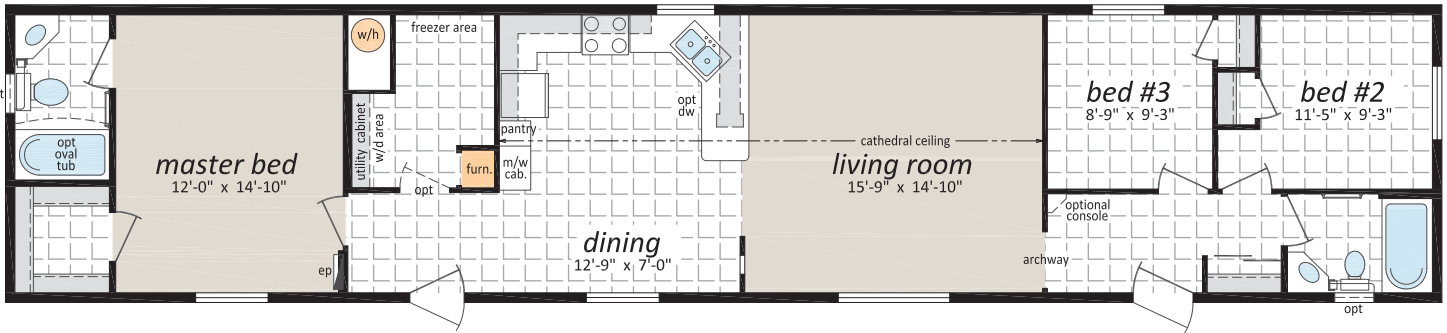
Optional
Ensuite



ST-411

16' x 76' 1,216 sq. ft.

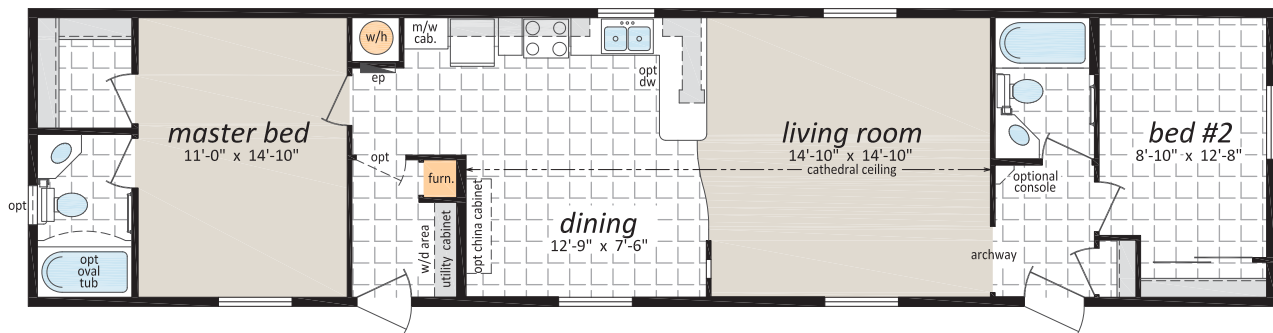
3 Beds, 2 Baths



ST-413

16' x 66' 1,056 sq. ft.

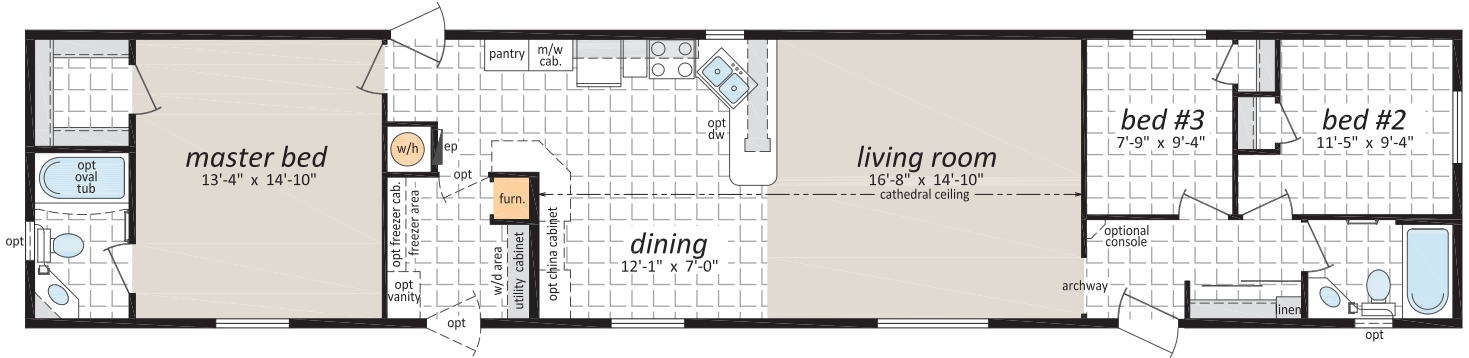
2 Beds, 2 Baths



ST-414

16' x 76' 1,216 sq. ft.

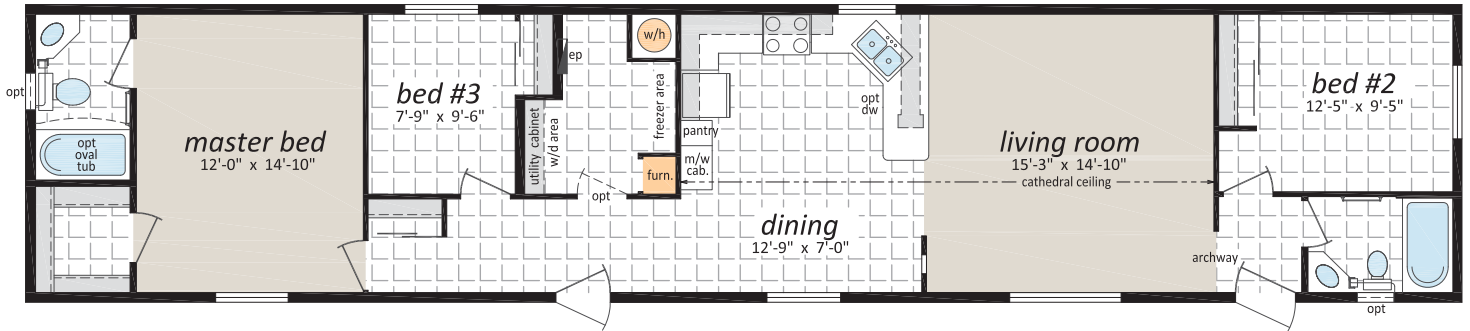
3 Beds, 2 Baths



ST-417

16' x 76' 1,216 sq. ft.

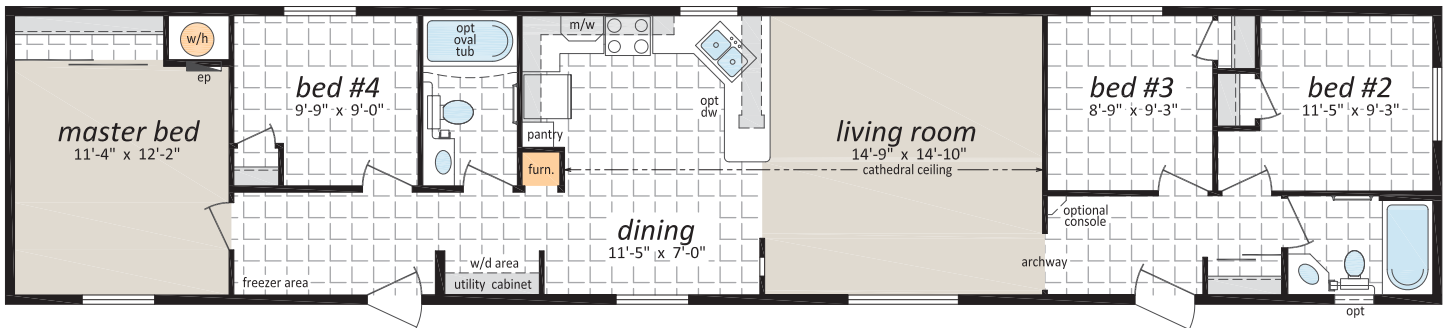
3 Beds, 2 Baths



ST-418

16' x 76' 1,216 sq. ft.

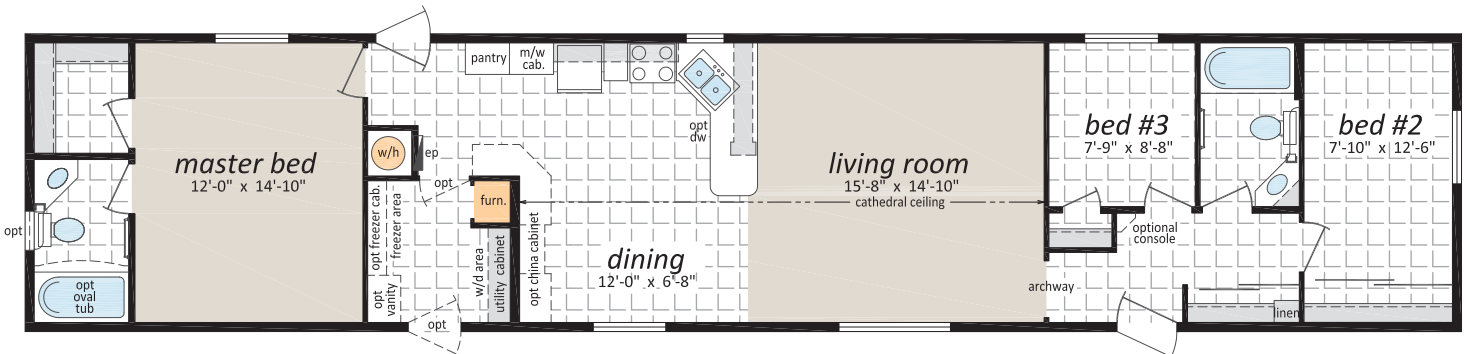
4 Beds, 2 Baths



ST-474

16' x 76' 1,216 sq. ft.

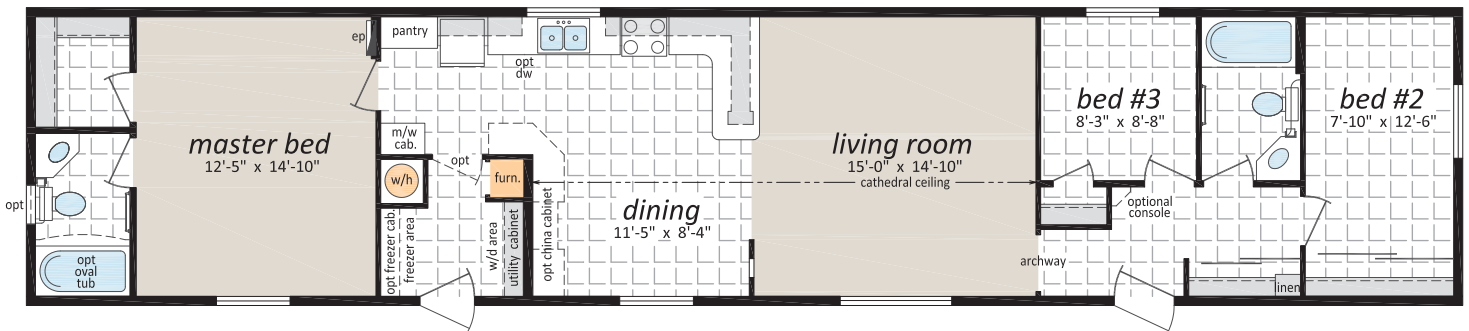
3 Beds, 2 Baths



ST-475

16' x 76' 1,216 sq. ft.

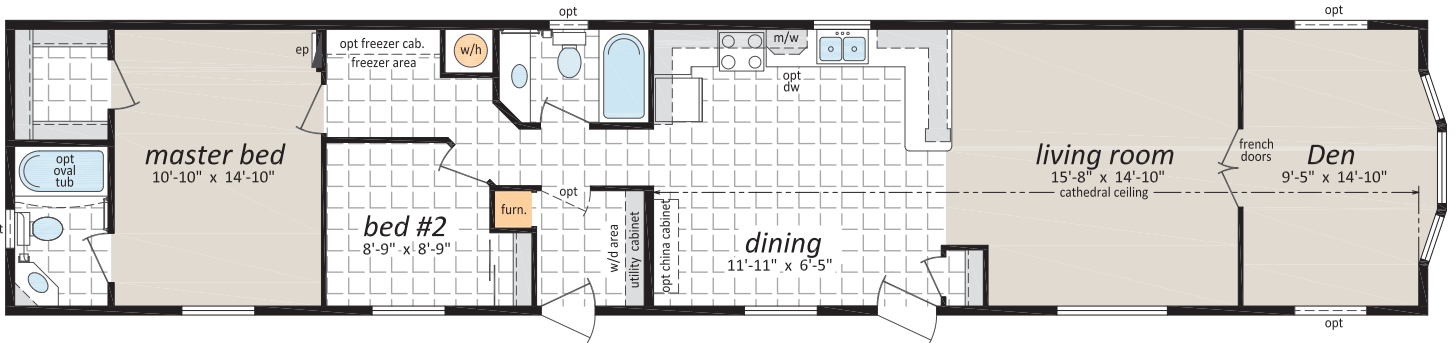
3 Beds, 2 Baths



ST-479

16' x 76' 1,216 sq. ft.

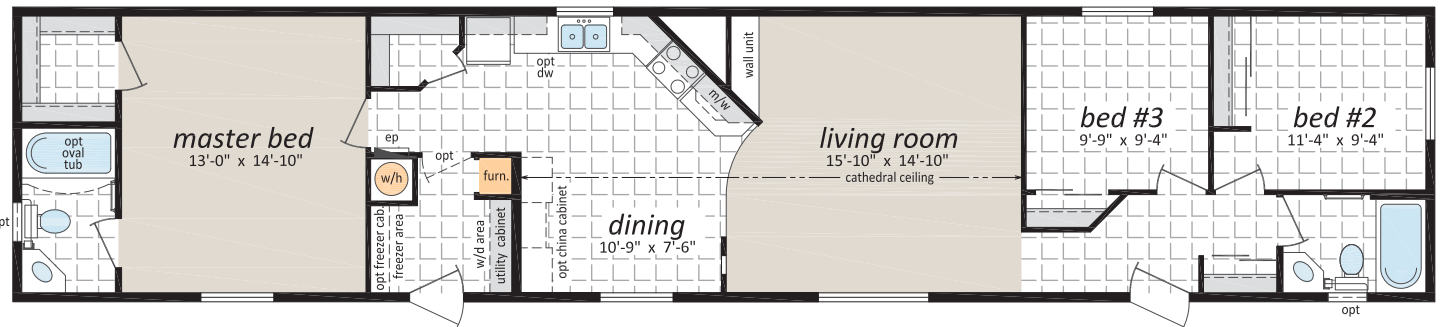
2 Beds, 2 Baths, Den



ST-480

16' x 76' 1,216 sq. ft.

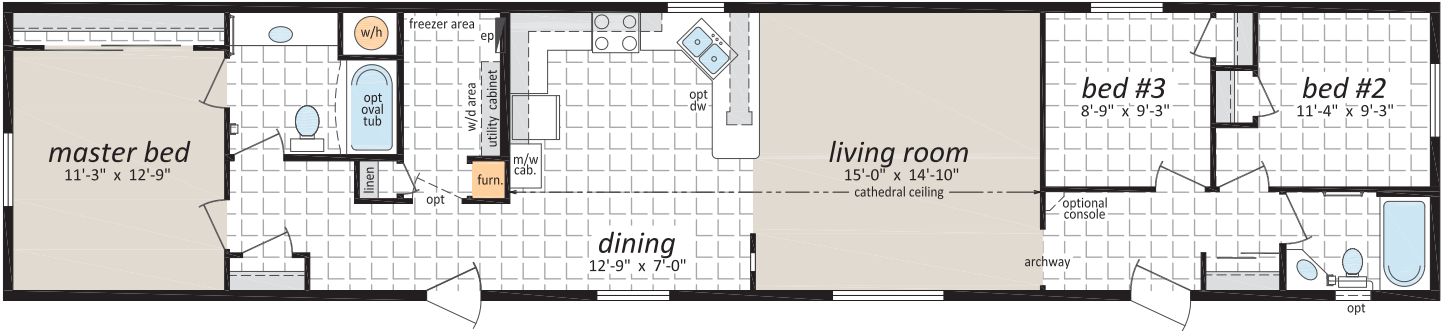
3 Beds, 2 Baths



ST-481

16' x 76' 1,216 sq. ft.

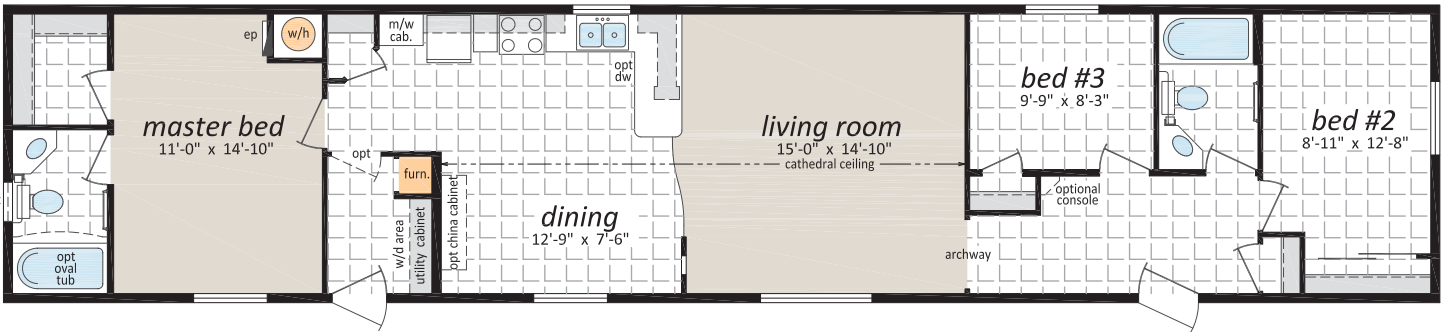
3 Beds, 2 Baths



ST-483

16' x 76' 1,216 sq. ft.

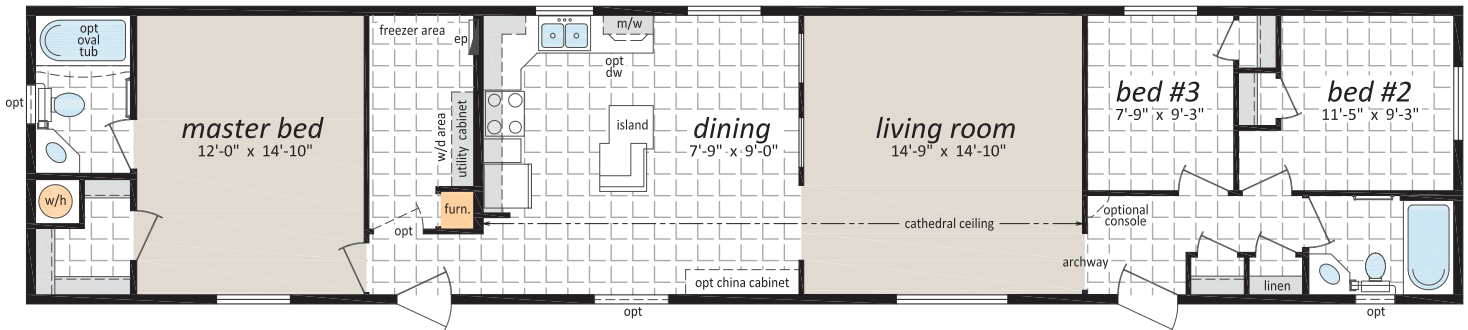
3 Beds, 2 Baths



ST-484

16' x 76' 1,216 sq. ft.

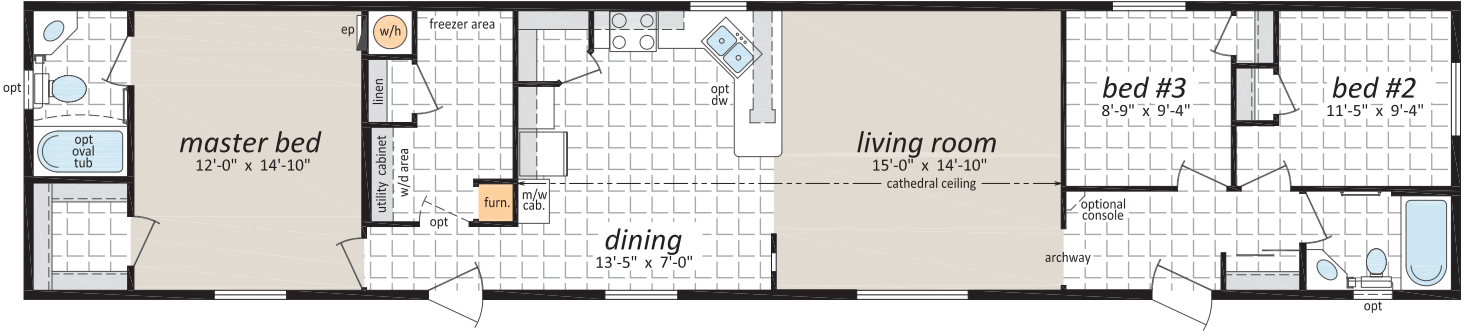
3 Beds, 2 Baths



ST-485

16' x 76' 1,216 sq. ft.

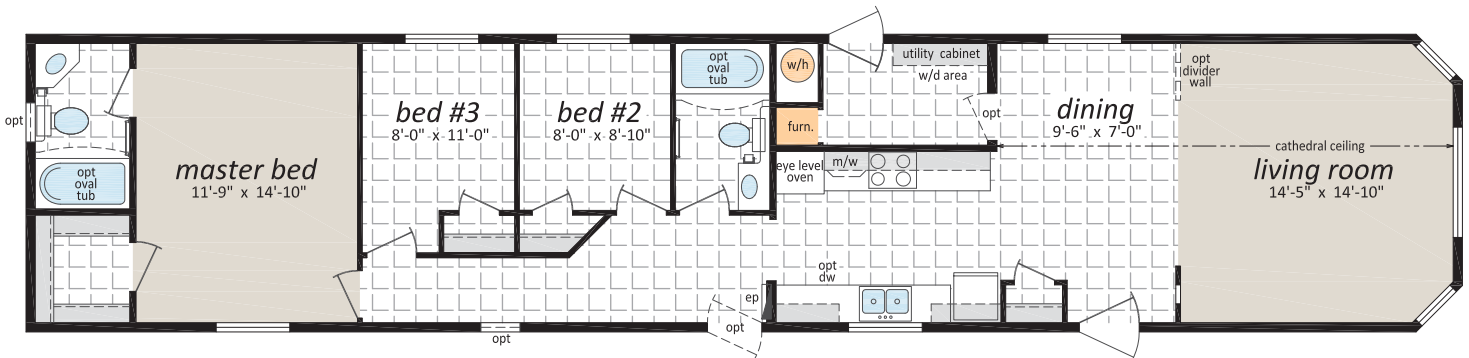
3 Beds, 2 Baths



ST-487

16' x 76' 1,216 sq. ft.

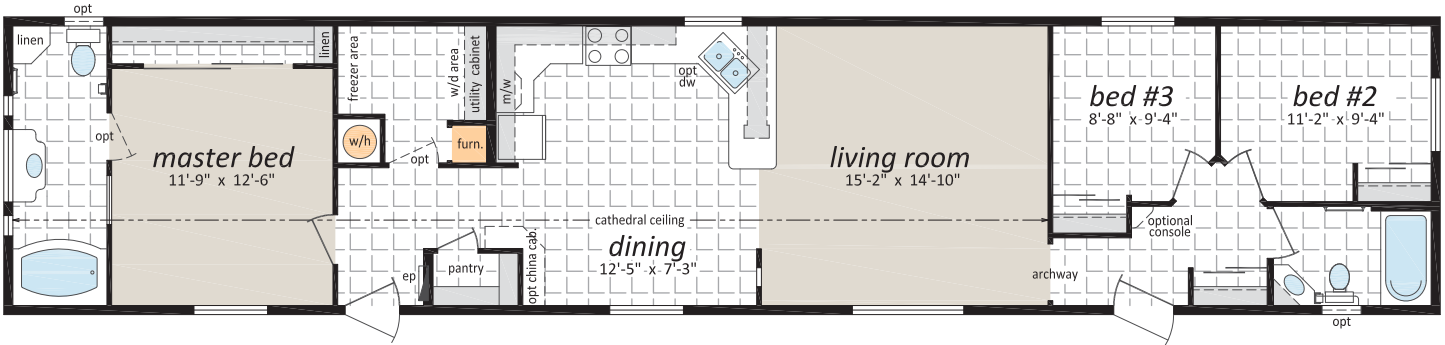
3 Beds, 2 Baths



ST-491

16' x 76' 1,216 sq. ft.

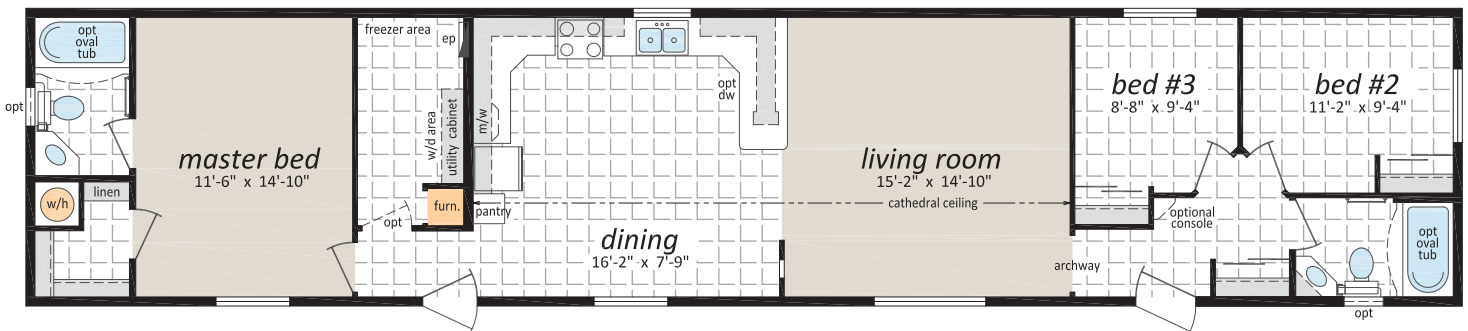
3 Beds, 2 Baths



ST-497

16' x 76' 1,216 sq. ft.

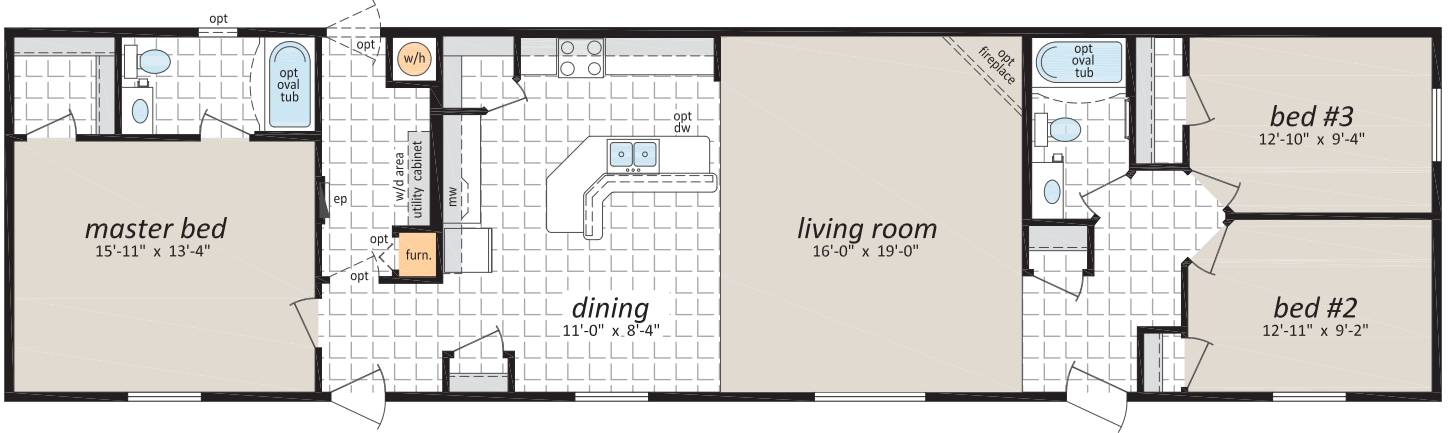
3 Beds, 2 Baths



AVS-20625

20' x 76' 1,520 sq. ft.

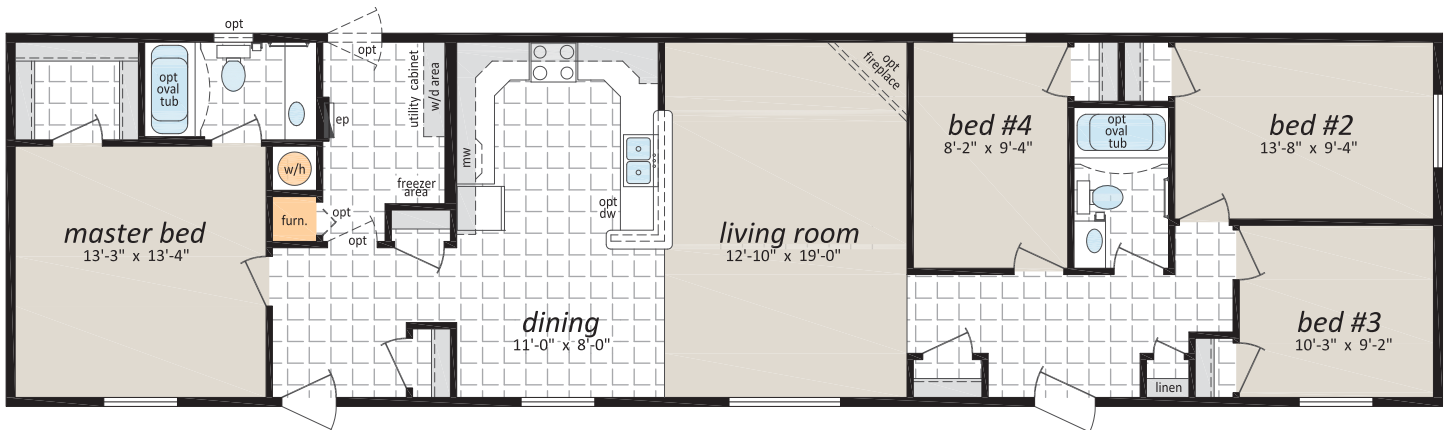
3 Beds, 2 Baths



AVS-20626

20' x 76' 1,520 sq. ft.

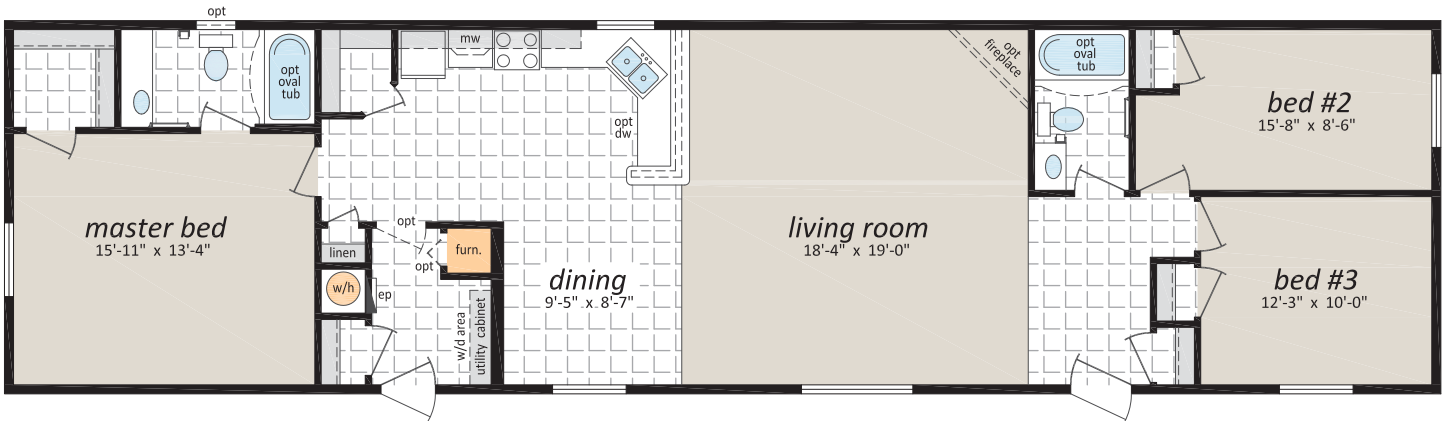
4 Beds, 2 Baths



AVS-20627

20' x 76' 1,520 sq. ft.

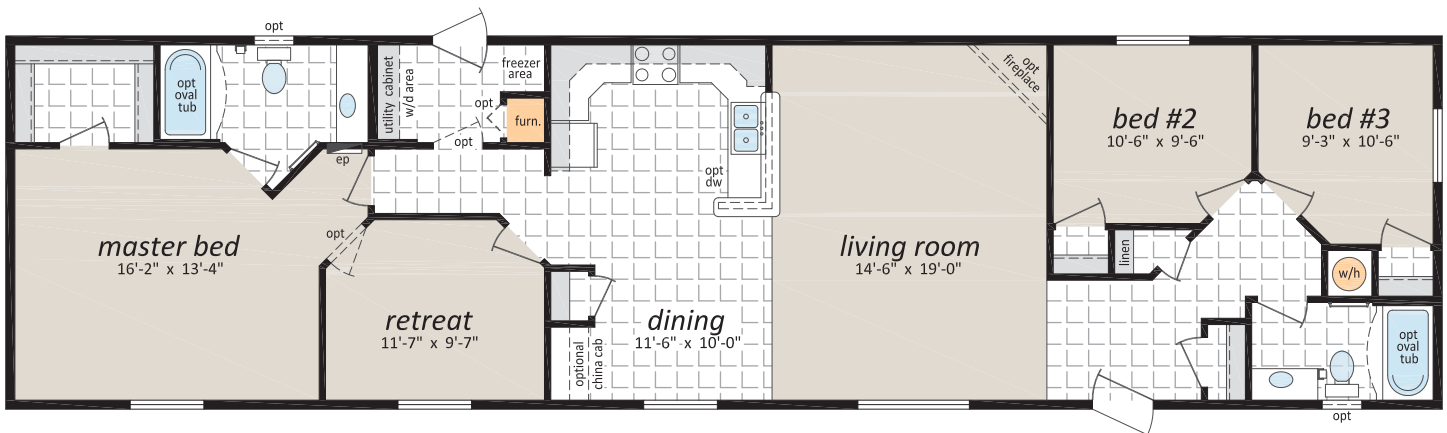
3 Beds, 2 Baths



AVS-20628

20' x 76' 1,520 sq. ft.

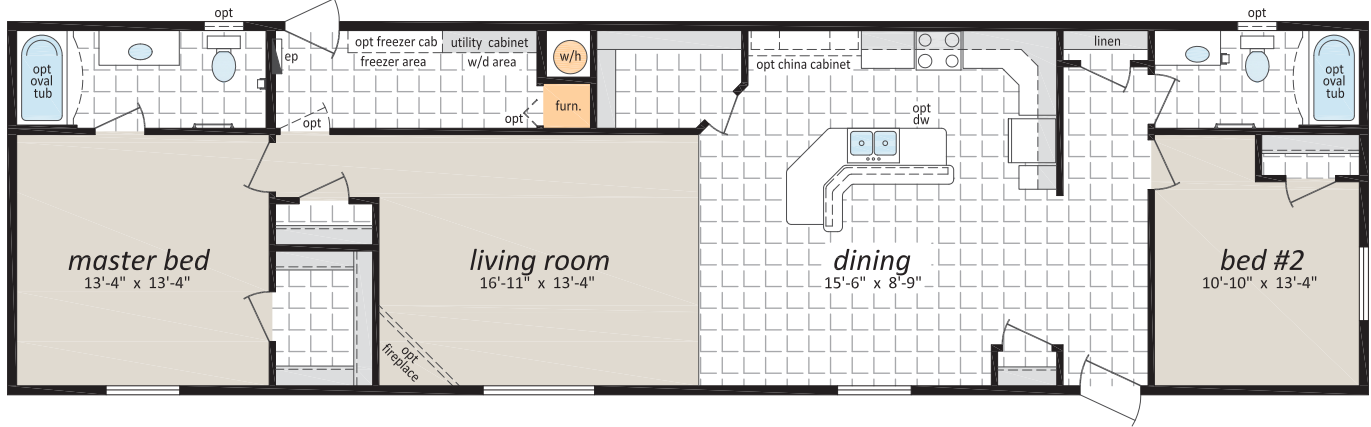
3 Beds, 2 Baths, Retreat



AVS-20629

20' x 72' 1,440 sq. ft.

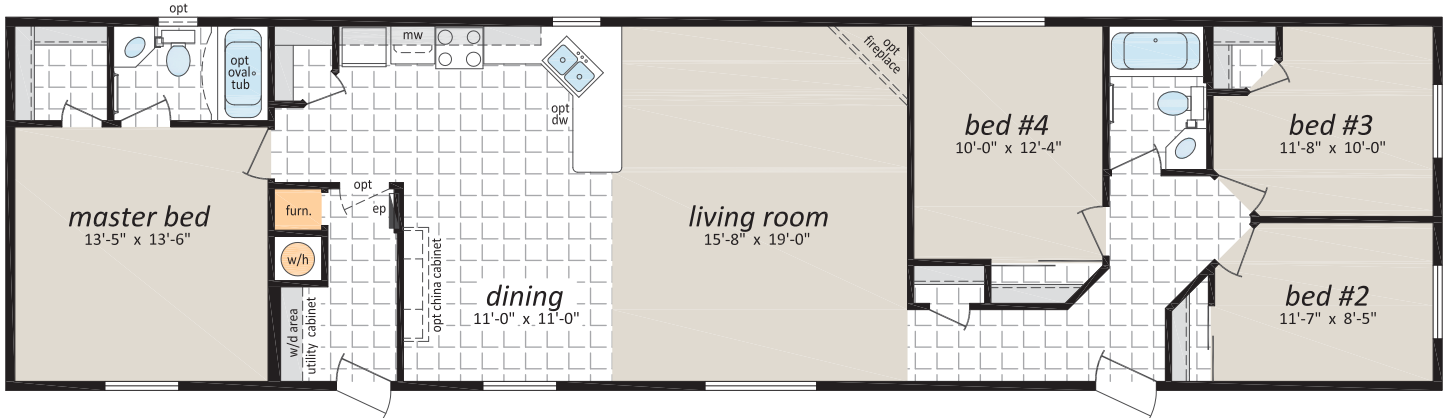
2 Beds, 2 Baths



AVS-20630

20' x 76' 1,520 sq. ft.

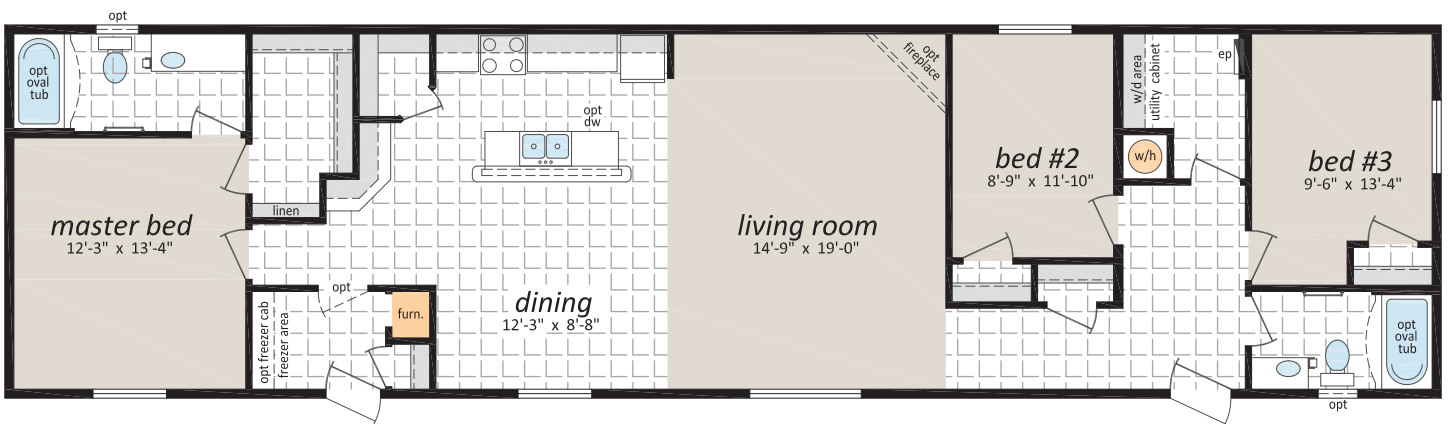
4 Beds, 2 Baths



AVS-20631

20' x 76' 1,520 sq. ft.

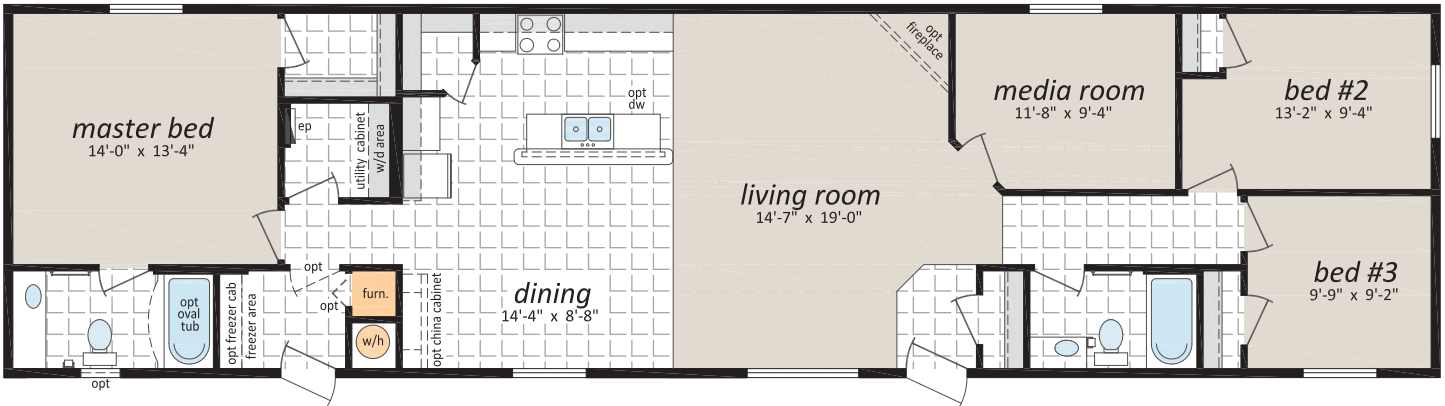
3 Beds, 2 Baths



AVS-20632

20' x 76' 1,520 sq. ft.

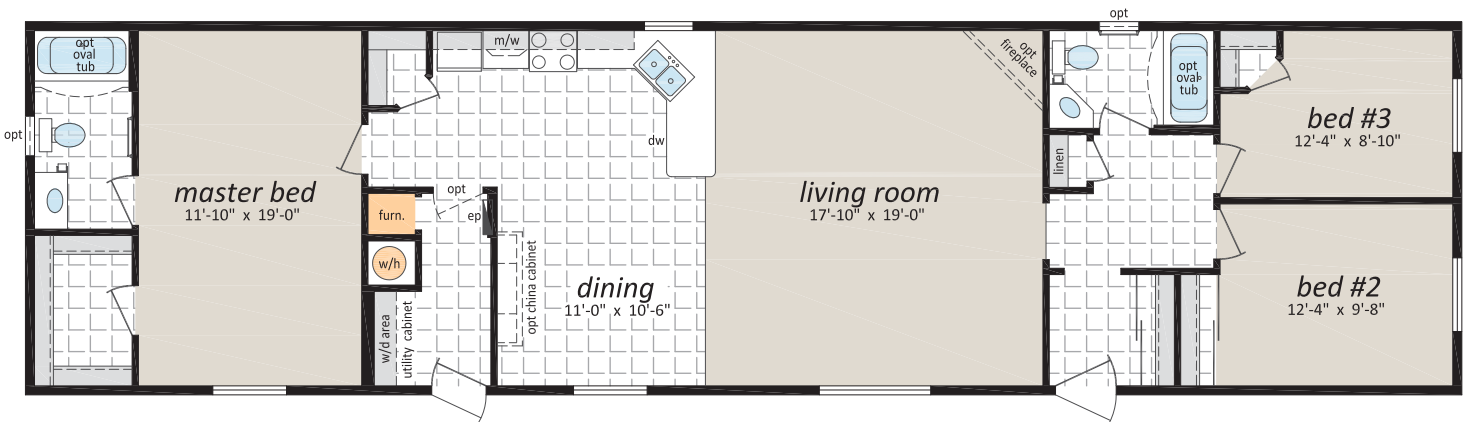
3 Beds, 2 Baths, Media Room



AVS-20633

20' x 76' 1,520 sq. ft.

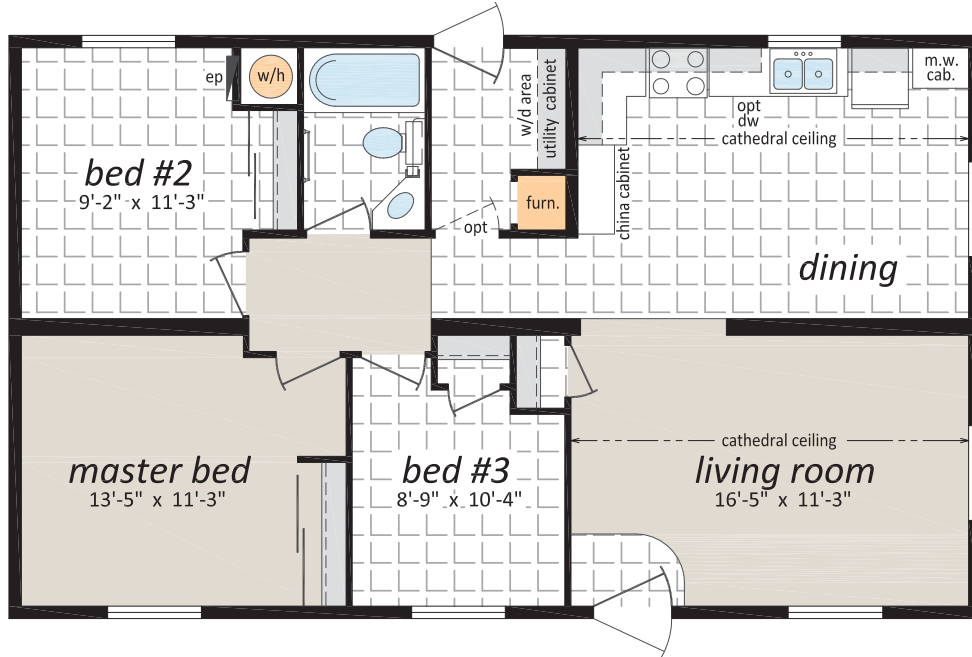
3 Beds, 2 Baths



ST-456

24' x 40' 960 sq. ft.

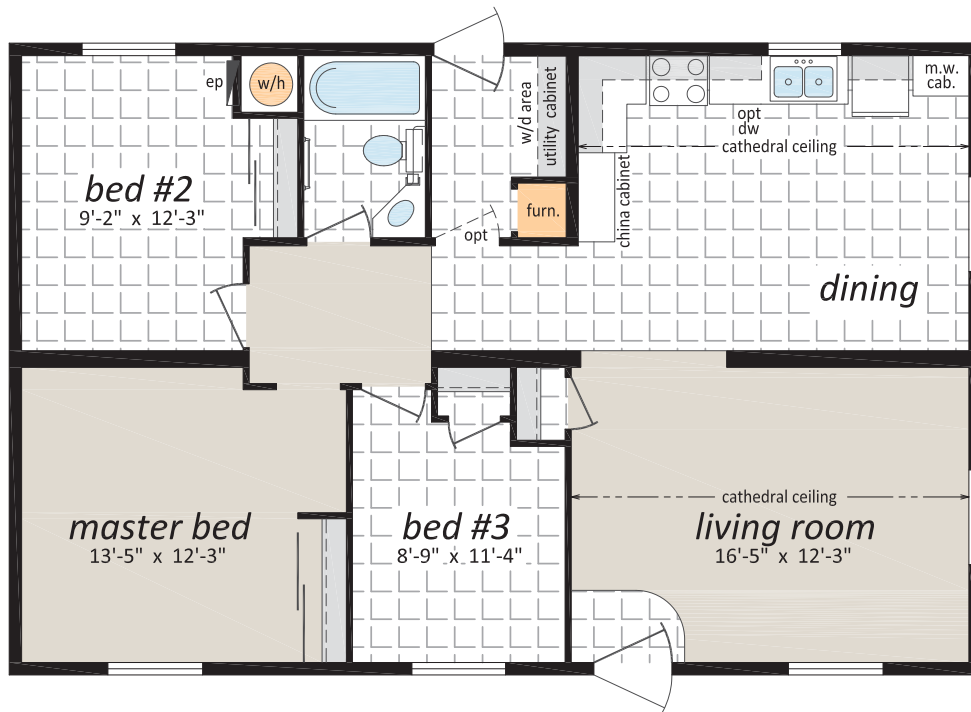
3 Beds, 1 Bath



ST-457

26' x 40' 1,040 sq. ft.

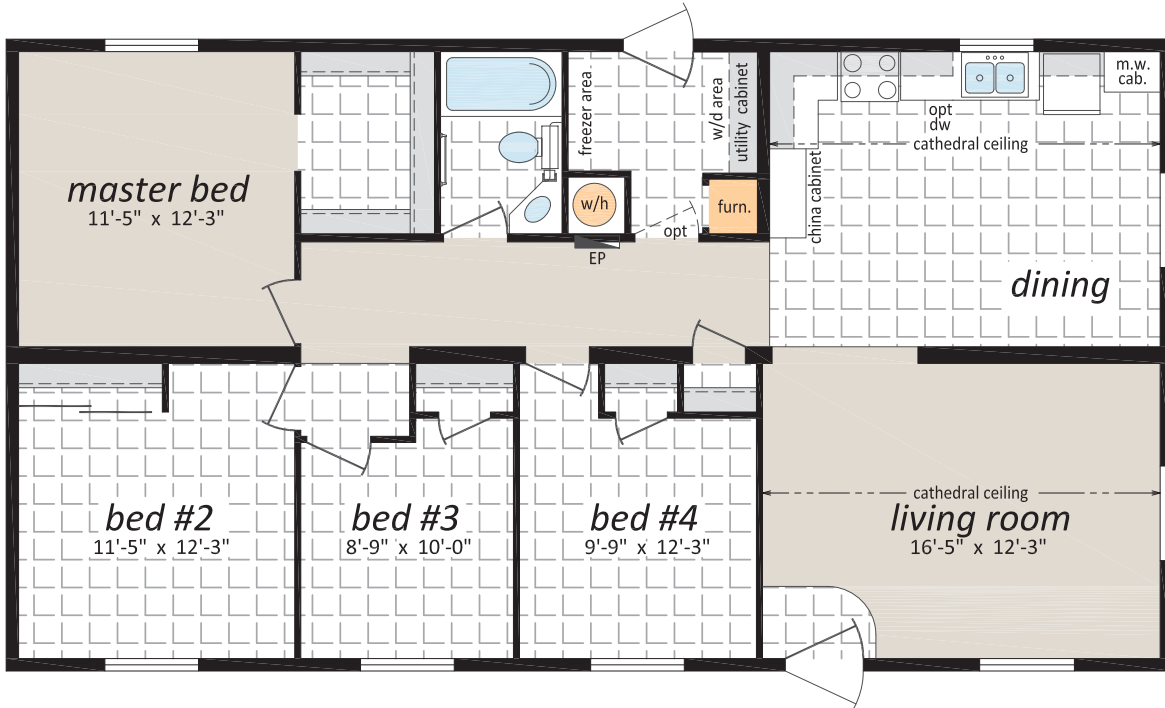
3 Beds, 1 Bath



ST-458

26' x 48' 1,248 sq. ft.

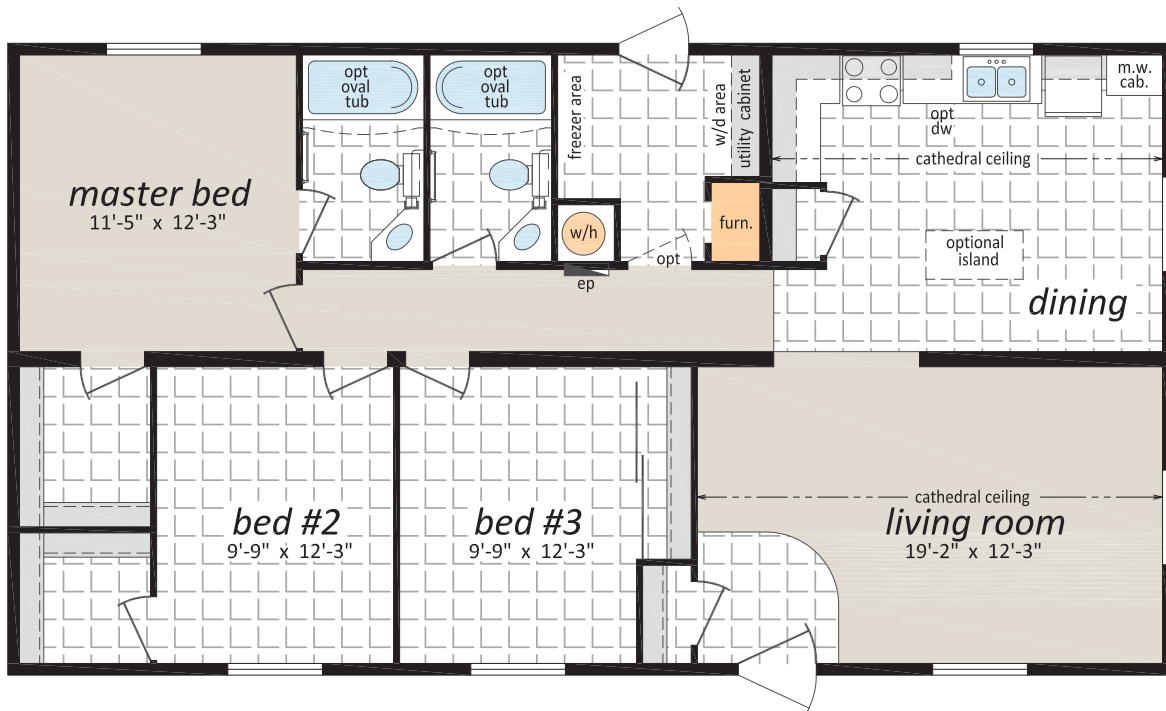
4 Beds, 1 Bath



ST-460

26' x 48' 1,248 sq. ft.

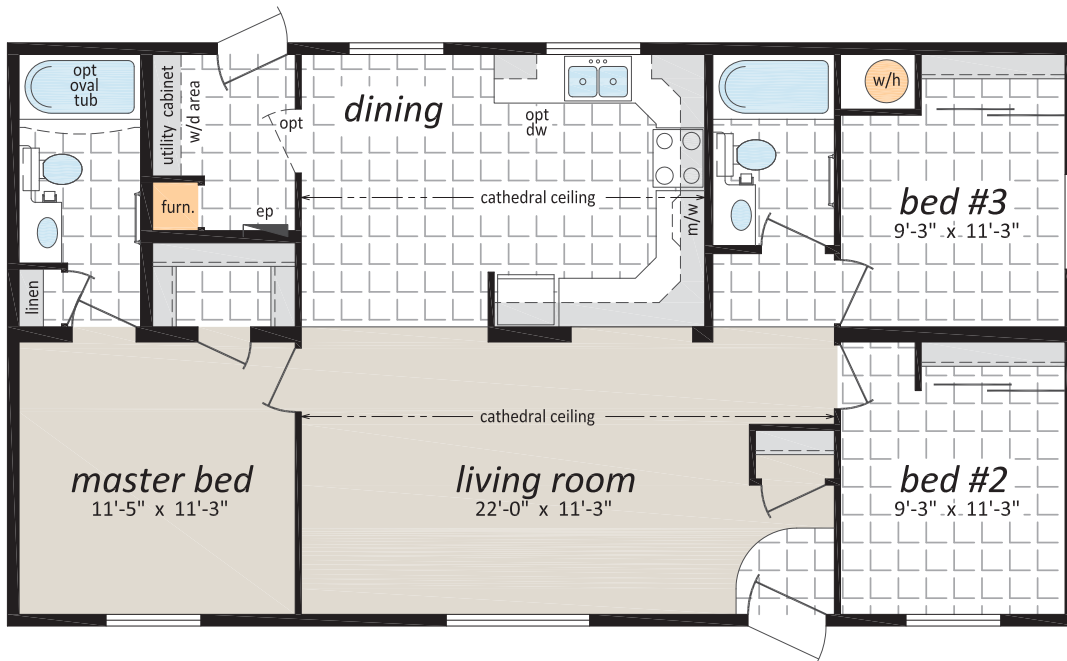
3 Beds, 2 Baths



ST-461

24' x 44' 1,056 sq. ft.

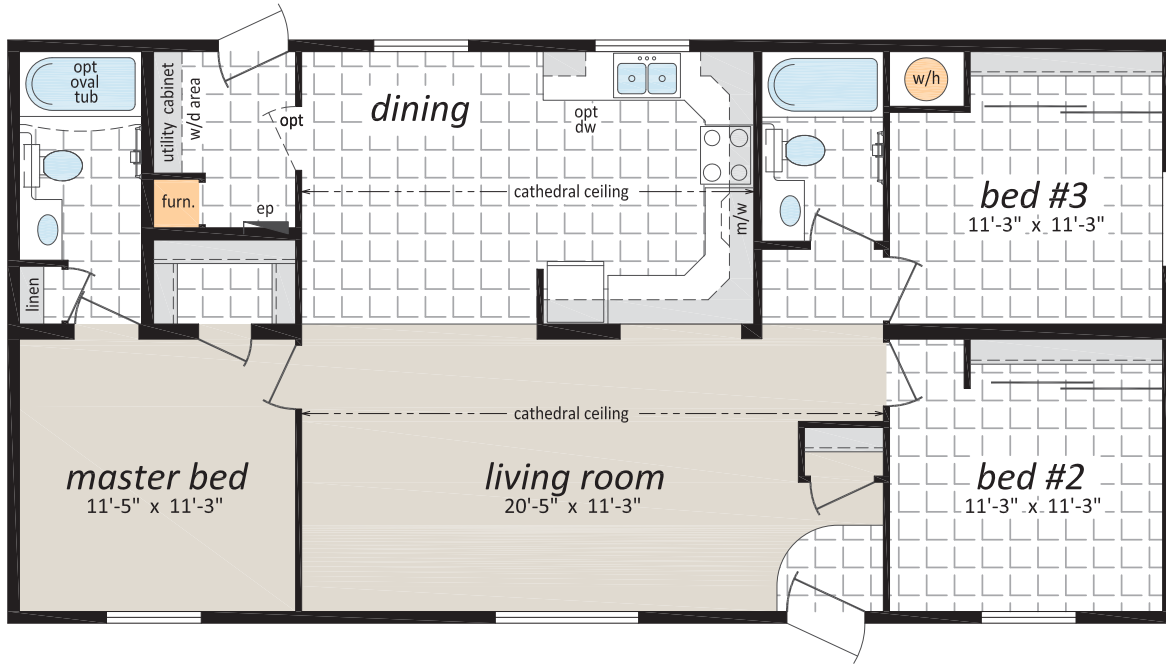
3 Beds, 2 Baths



ST-462

24' x 48' 1,152 sq. ft.

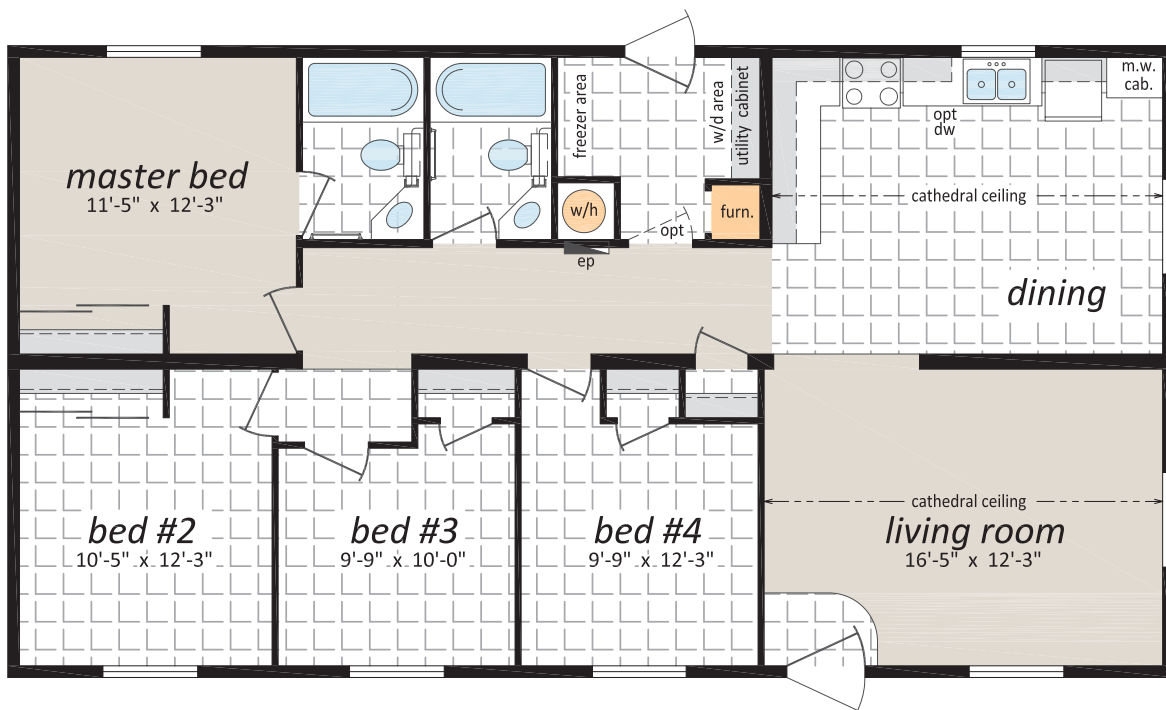
3 Beds, 2 Baths



ST-463

26' x 48' 1,248 sq. ft.

4 Beds, 2 Baths

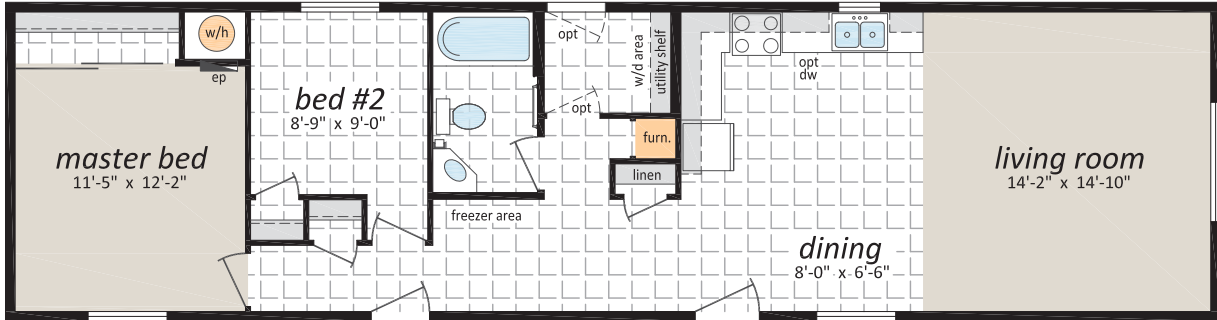




PR-1001

16' x 60' 960 sq. ft.

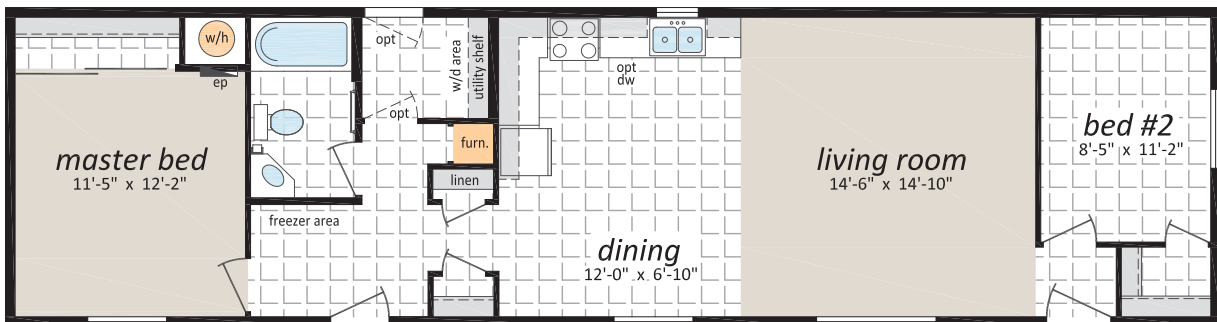
2 Beds, 1 Bath



PR-1002

16' x 60' 960 sq. ft.

2 Beds, 1 Bath

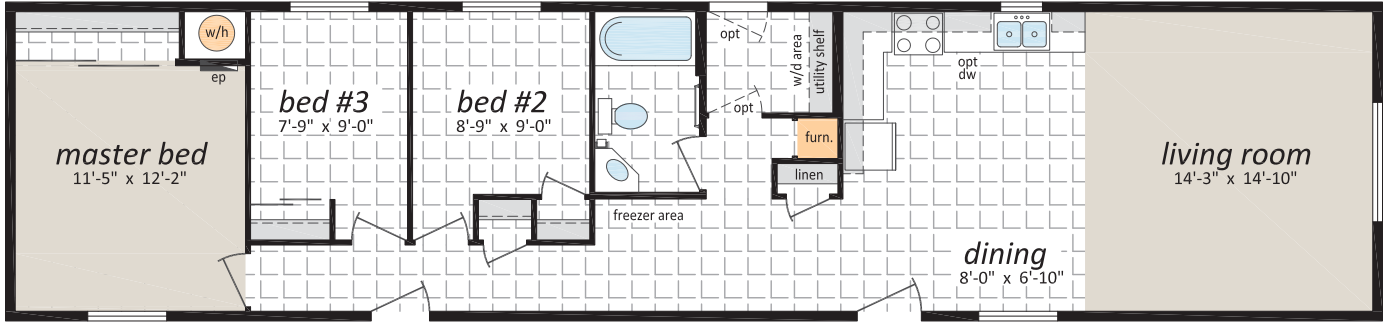




PR-1003

16' x 68' 1,088 sq. ft.

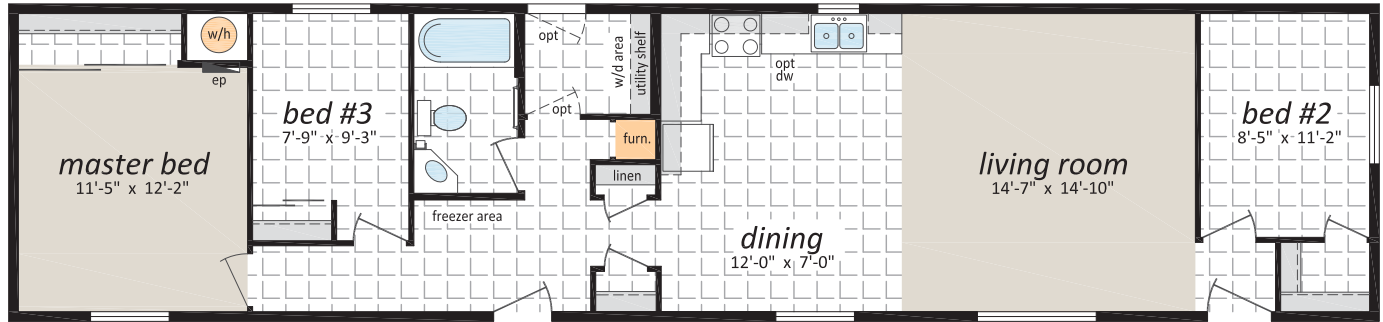
3 Beds, 1 Bath



PR-1004

16' x 68' 1,088 sq. ft.

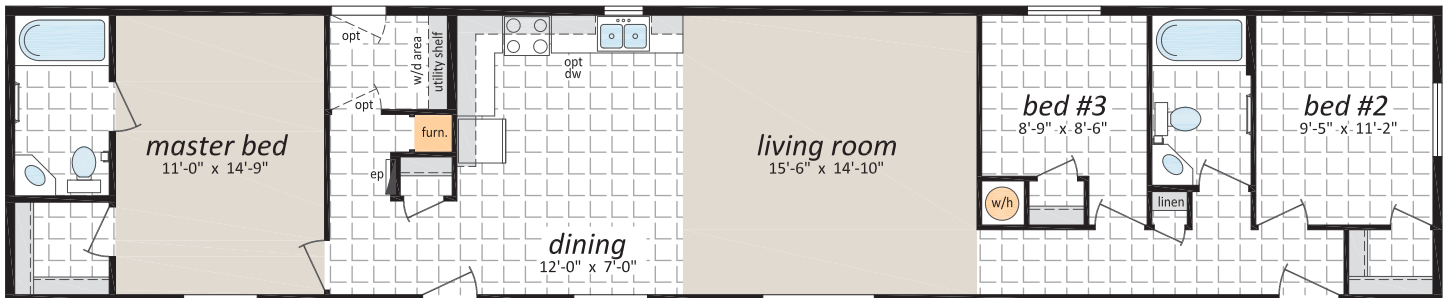
3 Beds, 1 Bath



PR-1005

16' x 76' 1,216 sq. ft.

3 Beds, 2 Baths



Optional Features

Exteriors

- Three Light Bay Windows
- Exterior Third Gables
- Patio and Garden Doors
- Vinyl Shutters
- Exterior Door with Half Round or 9 Lite Insert
- Vinyl Shakes in Gable
- Sequoia Select Upgrade Vinyl Siding
- Turbine Vents
- Extra Exterior GFI
- High Snow Load
- Smart Start Fascia, Corner and Pillars
- Skylights

Bathroom

- Ceramic Tile Backsplash
- Jetted Oval Tub
- Jetted One Piece Tub and Shower
- 60" Shower c/w Glass Doors
- Handicap Toilet
- Grab Bars

Kitchen

- Single Lever Faucet with Vegetable Sprayer
- Self Cleaning Oven
- Built-In Dishwasher
- Combination Microwave/Range Hood
- Under Cabinet Lighting
- Upgrade High Definition Laminate Countertops

Utilities

- Air Conditioner-Ready Furnace
- Extra Telephone/Cable Boxes
- Utility Room Door with Grill
- Electric Furnace
- 40 Gallon Electric Water Heater
- Washer and Dryer
- Stacking Washer and Dryer
- 200 Amp Service Panel
- Handi-Hite Bottom Mount Refrigerator
- Central Vacuum System
- Roughed in for Central Vacuum
- Extra Telephone Jacks
- Surge Protector

Interiors

- Painted Drywall
- Cathedral Ceiling
- Laminate Flooring
- Carpet in 2nd and 3rd Bedroom(s)
- French Doors
- Classique White Raised Panel Passage Doors
- Freezer Cabinets
- Deluxe Drapery Package #2
- Pewter Drapery Package
- Decora Switch Package
- Solid Wood Trim
- 2" PVC Blinds
- Programmable Thermostat

Check off your extras ...

... and we will take care of the rest!



SHELTER
HOME SYSTEMS

Statesman Home Series



Intertek



Canadian
Home Builders'
Association



10 YEAR



Progressive
HOME WARRANTY

Authorized Retailer:

P.O. Box 845 #200 Hwy 18 West
Estevan, SK S4A 2A7
www.shelterhomes.ca

Follow us:

